

4 Farmers View - £1,300 PCM

Beck Row Bury St. Edmunds IP28 8RL

shires

Estate & Letting Agents



"Consistently providing outstanding service to our clients"

£1,300 PCM

The Property

Three bedroom semi-detached property, located close to local amenities. The property comprises kitchen, living/dining room, 2.5 bathrooms, fully enclosed garden & off road allocated parking for two cars.

Features

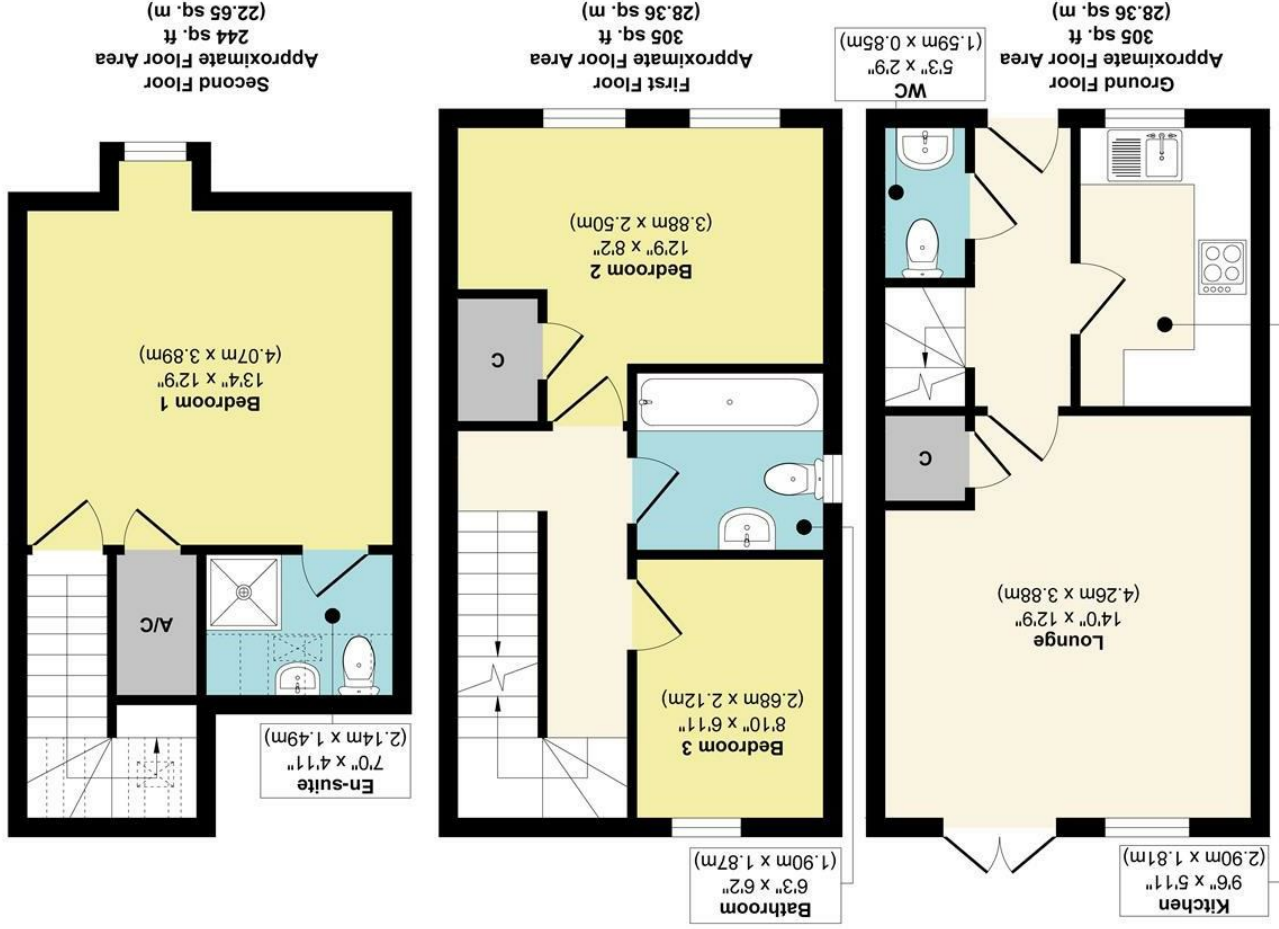
- SEMI DETACHED TOWNHOUSE
- CLOSE TO RAF BASES
- 3 BEDROOMS
- ELECTRIC HEATING & ENERGY RATING - D
- MODERN THROUGHOUT
- APPROXIMATE SIZE - 839 SQFT
- FAMILY BATHROOM, EN SUITE AND CLOAKROOM
- COUNCIL TAX BAND - C
- ALLOCATED PARKING & ENCLOSED REAR GARDEN
- AVAILABLE NOW





These sales particulars have been produced as a general guide only and we would draw to your attention that we have not carried out a detailed Survey of the property nor have we tested services, appliances or specific fittings. Whilst measurements and statements given within the details are provided in good faith, their accuracy should not be relied upon. If there are any points about which you may be uncertain or would like further clarification, we would suggest that you telephone this office and speak to our staff who will endeavour to assist you.

Farmers View, Beck Row, IP28 8RL



Henleys
 Independent Estate Agent

Approx. Gross Internal Floor Area 854 sq. ft. / 79.37 sq. m

